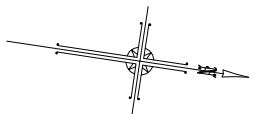
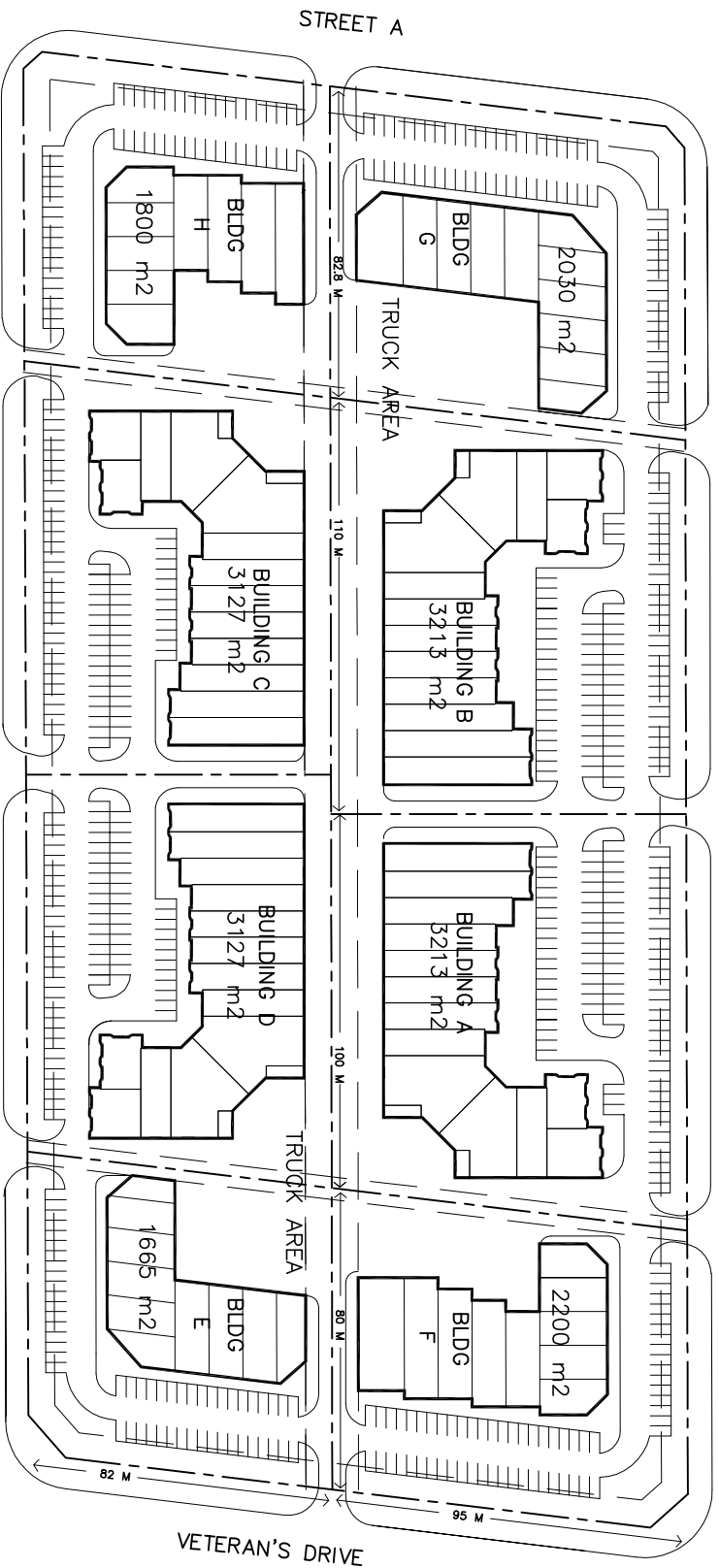


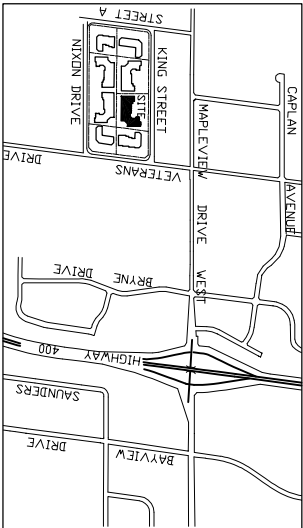
KING STREET



NIXON DRIVE

VETERAN'S DRIVE

KEY PLAN



BUILDING AREA TOTAL 20,375 m² 31.2 %
 SITE AREA 65,286 m²



17 Poyntz Street, Barrie, Ontario. L4M 3N6
 phone 705 737 9595 fax 705 739 8816

ISMarchitects

126 WELLINGTON STREET WEST
 SUITE 207, BARRIE, ONTARIO L4N 8J6
 705 726-2342 FAX 705 725-5355
 E-MAIL : ismarchitects@bellnet.ca

**COMMERCIAL BUILDING
 KING STREET AND VETERAN'S DRIVE**

**COMPOSITE
 SITE PLAN**

SCALE: 1:2000

SK-A1
 DRAWING NO.